

APDesign E-News

01.17.18



©Tim Hursley

Important Message from Dean de Noble regarding All-College Meeting on January 23rd.

Yesterday a message was sent out to our APDesign community. If you did not read this email please do so now by following the link [HERE](#).



Chief Executive Officer of the International Interior Design Association to present next Ekdahl Lecture Wednesday, January 24 at 4:30pm in Regnier Forum

Kansas State University, College of Architecture, Planning & Design (APDesign) will present Hon. Cheryl S. Durst, FIIDA, LEED AP as part of the 2018 Ekdahl Lecture Series on Wednesday, January 24 at 4:30pm in the Regnier Forum, Regnier Hall. Her lecture is titled: *Design, Culture, Work + Life: People, Place and The Future*. The event is free and open to the public.

As exceptional communicator, innovator, and visionary leader, Cheryl Durst has spurred progress, driven change, and encouraged the expansion of the Interior Design industry. As the Executive Vice President and Chief Executive Officer of the International Interior Design Association (IIDA), Cheryl is committed to achieving broad recognition for the value of design and its significant role in society through both functionality and engagement in every day work spaces and the built environment.

UPCOMING EVENTS

1.23.18

All College Meeting
Tim de Noble | 5pm |
Regnier Forum

1.24.18

Ekdahl Lecture Series:
Cheryl Durst | 4:30pm |
Regnier Forum

1.26.18

Eric Groft: The New
American Garden Lecture
| 4:30pm | Regnier Forum

1.30.18

Portfolio Basics | 6pm |
Regnier Forum

How far will you travel for the Holidays?

Poll Results

Not at all - 7.8%
1-100 Miles - 26.7%
100-500 Miles - 36.7%
500-1000 Miles - 10%
1000+ Miles - 18.9%

Photography Competition Photo Pick-Up

Congratulations to all of the winners and entrants to the photo contest. If you have not seen the list of winners you may read all about it in the K-State Today article [HERE](#). For those awaiting prize money to awarded, it will be put into

your K-State account soon.

Please pick up your Photos from the Thomas A. Tyler and Answers Inc. APDesign Architectural and Environmental Student Photography Competition by **Jan 26, 2018** from 2132 Regnier Hall. All photos that are not picked up will be disposed of after that time. If you cannot pick up your photos by then, please make arrangements with tjackson@ksu.edu.



APDesign student wins Manko design competition

Holle's project was the "KC Film Institute in the Crossroads District of Kansas City, Missouri." The design was an assignment in her fourth-year comprehensive studio class, taught by Genevieve Baudoin, assistant professor, requiring students to...

[Read more](#)
www.k-state.edu

Weigel Library Updates

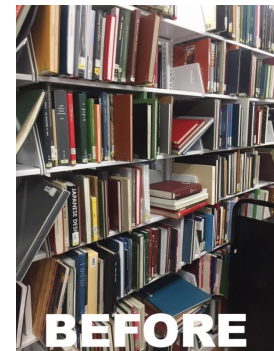


Weigel is put together – Phase I

The book relocating/adjusting/straightening project in Weigel Library was completed the afternoon of Wednesday, December 20. So Maxine could have a very Merry Christmas!

It was a long time coming and many individuals were involved getting it completed – all 993 shelves – Jacob, Jason, Josh, Logan, Maggie, Rachel, Sophia, Stasha (Weigel student assistants), Cody, Mitchell and Lawson (Richard's crew), and Tim and Celia (on loan for a few days from Brianna). Apologies to anyone omitted from the acknowledgement list.

After this initial move some "tweaking" still needs to happen in the stacks; but for the most part resources are now easier to find, more convenient to discover something else, and faster to shelve; a win-win situation for patrons and staff. If you gave up finding resources in Weigel, please come back in and see the difference. Thanks to all Weigel patrons for your cooperation, patience and understanding.



Student Assistants -

Weigel has 8 students employed as library assistants for the 2018 spring semester. During Weigel's 77 hours a week of operation these students are in the library to help patrons with their research and/or technology questions.

The assistants are: Aaron Church, Emma-Quin (EQ) Smith, Grant Price, Lance Brannock, Rachel Rankin, Reid Thornburg, Sophia Triantafyllopoulos, and Stasha Thomas.

Please ask for their assistance.

Resource of the Week –

Lotus International – Watch the digital display boards for information promoting this awesome periodical. Weigel's collection consists of 155+ issues; each dedicated to a specific topic in architecture, including "Landscape Urbanism", "Diagrams", "Temporary Architecture", "Performing Museums" and "New York Highlights". Lotus articles are indexed in Avery Index to Architectural Periodicals. Selected issues are currently on display next to the New Resources in Weigel, while the rest can be found at NA9.L6 in the stacks. *Lotus International* – an outstanding resource in Weigel.

This and that -

When you are in Weigel every book you look at needs a "browse" scan by staff. These browse statistics are vital in determining what stays, what goes, what and how much we need. Right now that information is really important especially with budget cuts and call backs!

Please **bring all library materials you used to the circulation desk**, especially those items you aren't checking out for that all important browse scan by staff. Another option is to place unwanted resources on the carts located in the stacks for your convenience.

A helpful **tip when using Search It**, the discovery tool on the K-State Libraries website: to text the call number of a resource hover over the (purple call number) on the screen and Text Me the Call Number will "magically" appear.

Upcoming APDPro Events

**Events are K-State 360 eligible*

I Was There: Reflections on MLK's 1968 K-State Visit

[SPECIAL TOPIC]

Fri., Jan. 19, 3:30 p.m., Town Hall, Leadership Studies Building

K-State panelists will reflect on their experience of attending MLK Jr.'s 1968 speech. (Proof of attendance required on *MyAPDPro* website)

Sins of Our Fathers – Growing Up in the Shadow of Segregation and in the Hope of Integration

[SPECIAL TOPIC]

Wed., Jan. 24, 3-4 p.m., Town Hall, Leadership Studies Building

Dean de Noble will present this lecture as a part of MLK Observance Week. (Proof of attendance required on *MyAPDPro* website)

Ekdahl Lecture: Cheryl S. Durst

[SPRING LECTURE]

Wed., Jan. 24, 4:30 p.m., Regnier Forum

MLK Week Lecture with Martin Luther King III*

[SPRING LECTURE]

Thurs., Jan. 25, 12:30 p.m., Banquet Room, K-State Alumni Center

The lecture is free and open to the public, but tickets are required. Tickets are available for faculty, staff and the public in the Office of Diversity, 224 Anderson Hall, and for students in the Center for Student Involvement, Room 114 of the K-State Student Union. (Proof of attendance required on *MyAPDPro* website)

Eric Groff: The New American Garden

[SPRING LECTURE]

Fri., Jan. 26, 4:30 p.m., Regnier Forum

APDPro Career Spotlight Series with Hoefer Wysocki Architecture

Tues., Jan. 30, 10:30 a.m.-1:30 p.m., Welcome Desk (south end of Seaton Hall)

Stop by the Welcome Desk to learn more about Hoefer Wysocki. Check out their VR display of the Hale Library renovation too!

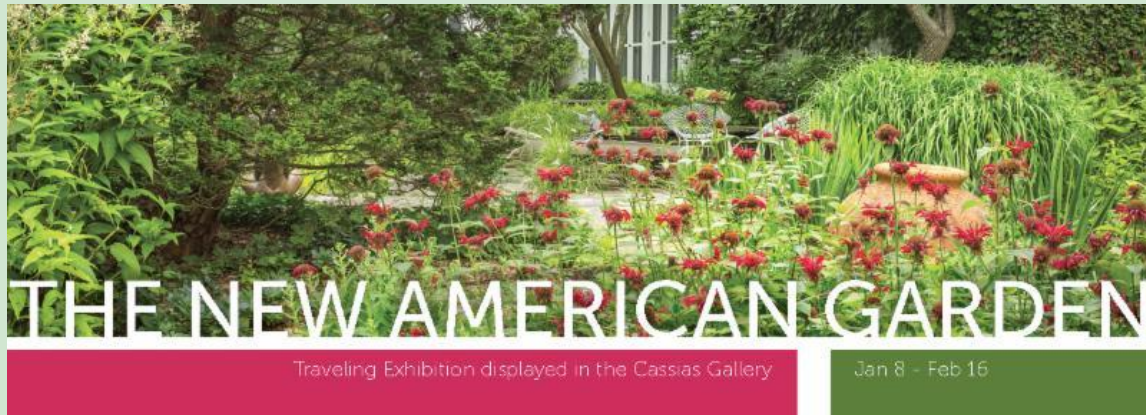
APDPro: Portfolio Advice from the Experts*

[PORTFOLIO BASICS, SPECIAL TOPIC]

Tues., Jan. 30, 6 p.m., Regnier Forum

Learn how to create a portfolio that will get you noticed by future employers. Professionals from Hoefer Wysocki

The New American Garden Exhibit and Lecture



Eric Groft, Principal with OvS
Jan 26, 2018
Regnier Forum
4:30 pm

A reception for student and professional members of ASLA will follow in The Ekdahl, 5:30 pm.

The Exhibit runs in the Cassias Gallery in Regnier Hall through February 16, 2018.

The New American Garden: The Landscape Architecture of Oehme, van Sweden exhibition includes 52 contemporary and newly commissioned photographs of important residential, civic, and commercial projects. Its debut in 2015 was timed to the 25th anniversary of the influential 1990 book *Bold Romantic Gardens*, which the two business partners wrote with Susan Rademacher, former executive director of the Louisville Olmsted Parks Conservancy, Inc., and currently the parks curator at the Pittsburgh Parks Conservancy.

[APDesign Website](#)

College of Architecture, Planning & Design | (785) 532-5950 | apdesign@ksu.edu |
Kansas State University - 2132 Regnier Hall
Manhattan, KS 66505

STAY CONNECTED

